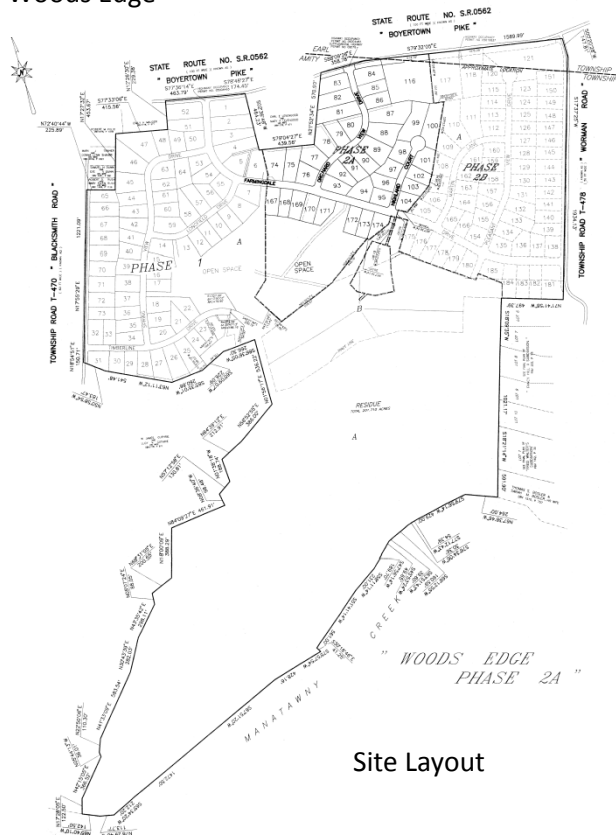




Entrance to Woods Edge



Site Layout

This two-phase residential subdivision project for Grande Construction contains approximately 331 single-family homes. The total size of the tract is approximately 307 acres. The project scope contained the following services:

- Site Planning
- Vehicular and Pedestrian Circulation Patterns
- Storm Drainage and Erosion & Sediment Control Design
- Grading & Landscape Design
- Highway Occupancy Permit Plans
- Traffic Impact Study
- Utility Design & Site Lighting
- Preliminary and Subdivision Plans
- Access Management
- Construction Documents
- Municipal and State Approvals

This project has access along Boyertown Pike (S.R. 0562) from Orchard Drive and two access points along Township Road T-740, Blacksmith Road. This large subdivision project was approved in approximately 12 months from the Notice to Proceed. This project had six new internal roadways measuring a total of over 4 miles in length.

Woods Edge Subdivision

Amity and Earl Townships, Berks County, PA