

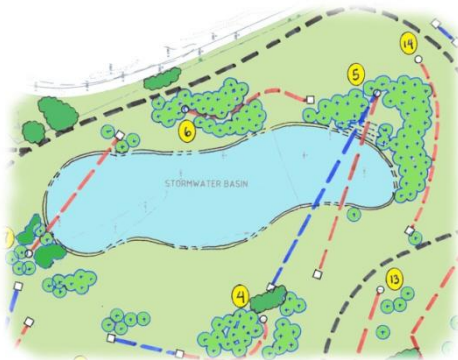


The Township of South Lebanon in Lebanon County approached Stackhouse Bensinger, Inc. (SBI) with a request to develop a Master Plan for their existing park. The Township had acquired additional property adjacent to the park and wanted to expand the park's amenities to include a range of new recreational opportunities. SBI developed a Master Plan, which added several sports fields, ample parking and an 18-hole Disc Golf course that winds its way through the existing and proposed park grounds.

The project scope included:

- Site Inventory and Analysis
- Pedestrian Circulation Development
- Parking Layout
- Grading and Landscaping
- Storm Water Management
- Active and Passive Recreational Amenities

SBI is working with the Township to finalize an overall park Master Plan that will maximize the recreational potential of the park, while minimizing the environmental impacts.



South Hills Park Master Plan

South Lebanon Township, Lebanon County, PA